

RUCKUS® Network Director

Centralized inventory control of your converged RUCKUS network



**RUCKUS Network
Director™**

BENEFITS

GLOBAL NETWORK VISIBILITY

Monitor multi-cluster statistics from a single dashboard with one-click reach into controllers and APs.

UNIFY AP REGISTRY

Registration and tracking of RUCKUS APs for inventory management, control, provisioning and health visibility.

SIMPLIFY CLUSTER MANAGEMENT

Ability to view and assign RUCKUS APs across multiple SmartZone Clusters.

BULK PROVISIONING

Batch processing based on access point serial number for faster network turn-up, test and activation.

STREAMABLE METRICS OUT-OF-THE-BOX

Robust APIs for integration with northbound managers.

SEAMLESS SCALABILITY

As a virtual appliance, scales to support one million access points and supporting SmartZone clusters.

CENTRALIZED INVENTORY CONTROL OF YOUR RUCKUS NETWORK

RUCKUS Network Director is designed to provide network operations and Wi-Fi teams with greater control and flexibility in the management of their SmartZone managed network. Network Director provides single-pane-of-glass visibility for superior AP inventory monitoring and management, and unparalleled AP health visibility. RUCKUS Network Director is a virtual appliance that scales to support your evolving converged wireless and wired edge network.

Inventory Management

Network Director will be your central point for inventory visibility and management of all your RUCKUS access points across multiple SmartZone clusters. A centralized inventory management providing greater AP inventory control, allowing for bulk movement of APs from one SmartZone cluster to another, and reduced back office handling of APs through serial number pre-provisioning.

Access Point Provisioning

Network Director will play a vital role in the management of your SmartZone managed network. From acquisition to deployment, Network Director will help you manage and control your access point inventory. With pre-provisioning capabilities on newly acquired APs based on serial number to bulk moves of deployed access points based on IP Subnets from one SmartZone Cluster to another, Network Director will keep track of your RUCKUS network and even help identify stranded or lost access points.

Network Health Monitoring

Network Director provides an intuitive, easy-to-understand graphical user interface (GUI) that allows operations teams to quickly view the ongoing health of all SmartZone clusters as well as access points. A dashboard with visual indicators quickly calls attention to any area of the Wi-Fi network needing immediate attention and drill-down capabilities provide a single point for network monitoring and control.

Operational Management Capabilities

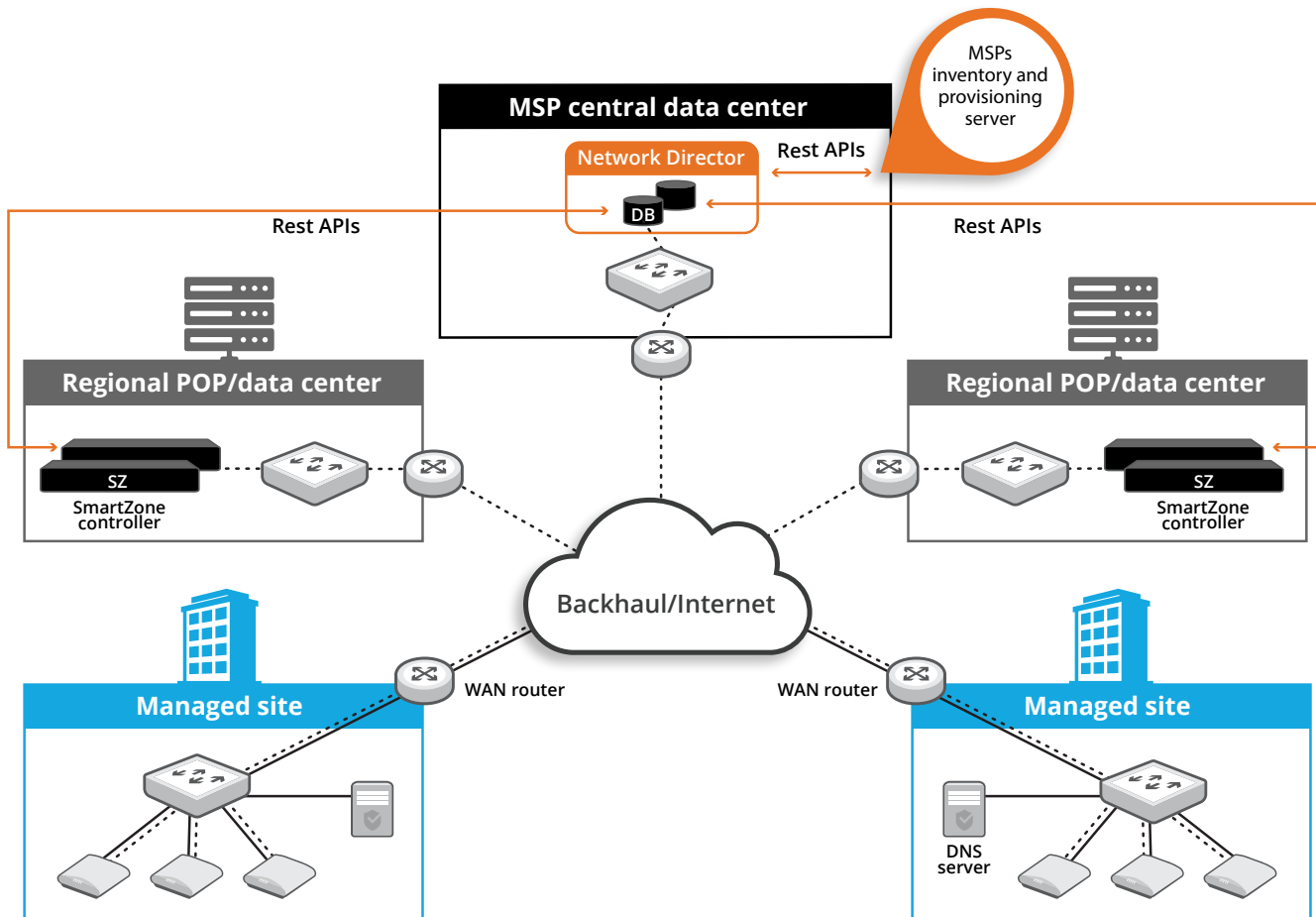
Network Director allows operations and management teams the flexibility to control a SmartZone managed network from a single pane of glass. Simplifying SmartZone backup and restore, the movement of APs from one SmartZone Cluster to another, and click through management access to individual SmartZone cluster graphical user interfaces (GUIs).

Integrated APIs

Network Director enables the use of third-party configuration, monitoring, reporting and business intelligence tools through open and streaming APIs. It provides partners, service providers and customers access to RESTful JSON APIs for management and control.

DEPLOYMENT ARCHITECTURE

RUCKUS Network Director is a virtual appliance that can scale to support one million of RUCKUS access points and their supporting SmartZone clusters. Network Director provides a single pane of glass for global visibility to the entire RUCKUS network.



Deployment Requirements

| VARIABLE | DATA |
|---|---|
| Number of vCPU | Minimum two |
| Memory RAM | Minimum 4 GB |
| Storage | 64GB HDD or SSD |
| Ports | AP-to-RND: HTTPS, port 443 Browser-to-RND: HTTPS, port 443 RND-to-SZ: HTTPS, port 443, 7443, 8443 |
| Installation options | 1. VMware ESXi 5.5 or newer 2. Kernel-based Virtual Machine (KVM) |
| Network Director management by third party | Network Director can be managed via REST/JSON APIs |

Product Ordering Information

| PART NUMBER | DESCRIPTION |
|----------------------|--|
| L09-VRND-WW00 | Virtual RUCKUS Network Director, one instance (no device management licenses included) |
| L09-0001-ND00 | Device management license for virtual RND, one per RUCKUS network AP Device |

Key Functionality

| VARIABLE | DATA |
|---|---|
| Scale | One million access points and supporting SmartZone clusters |
| RUCKUS SmartZone support | Virtual SmartZone H and E, SZ-100, SZ-300, SCG200 |
| RUCKUS AP support | All RUCKUS APs running 3.2 release and beyond |
| Network Director management by third party | Network Director can be managed via REST/JSON APIs |



commscope.com

Visit our website or contact your local CommScope representative for more information.

© 2020 CommScope, Inc. All rights reserved.

Unless otherwise noted, all trademarks identified by ® or ™ are registered trademarks, respectively, of CommScope, Inc. This document is for planning purposes only and is not intended to modify or supplement any specifications or warranties relating to CommScope products or services. CommScope is committed to the highest standards of business integrity and environmental sustainability with a number of CommScope's facilities across the globe certified in accordance with international standards, including ISO 9001, TL 9000, and ISO 14001. Further information regarding CommScope's commitment can be found at www.commscope.com/About-Us/Corporate-Responsibility-and-Sustainability.

PA-114409-EN (03/20)